

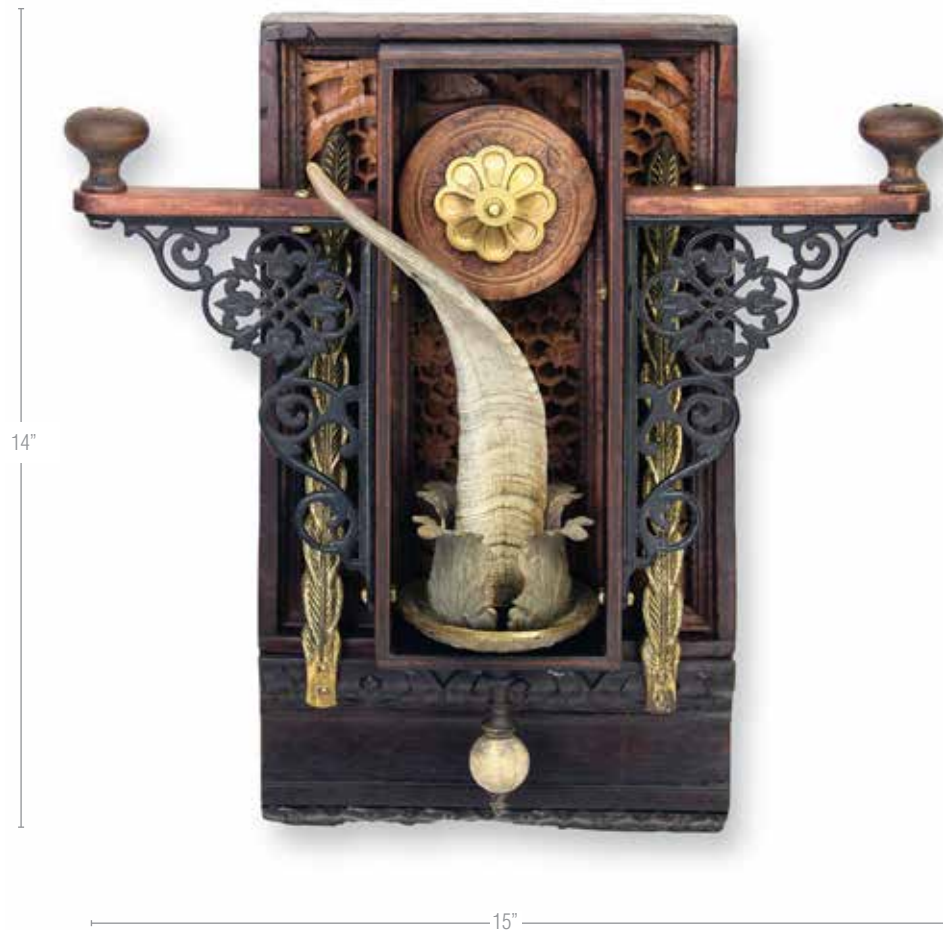
## Monarch

- Tiger Nautilus Shell
- German Candelabra
- Misc. Brass Hardware
- Flywheel
- Wooden Crate



Jeff

- Shelf Brackets
- Teak Screen
- Horn
- Drawer Pulls
- Old Molding
- Curtain Tiebacks
- Lamp Parts



## Study in Brown II

- Drawer Pull
- Woven Coaster
- Sushi Rolling Mat
- Crochet Hoop
- Pulley



## Peggy

- Pulley
- Glass Washboard
- Broken Heating Grate
- Oiler
- Stair Newel
- Glass Door Knob
- Misc. Hardware



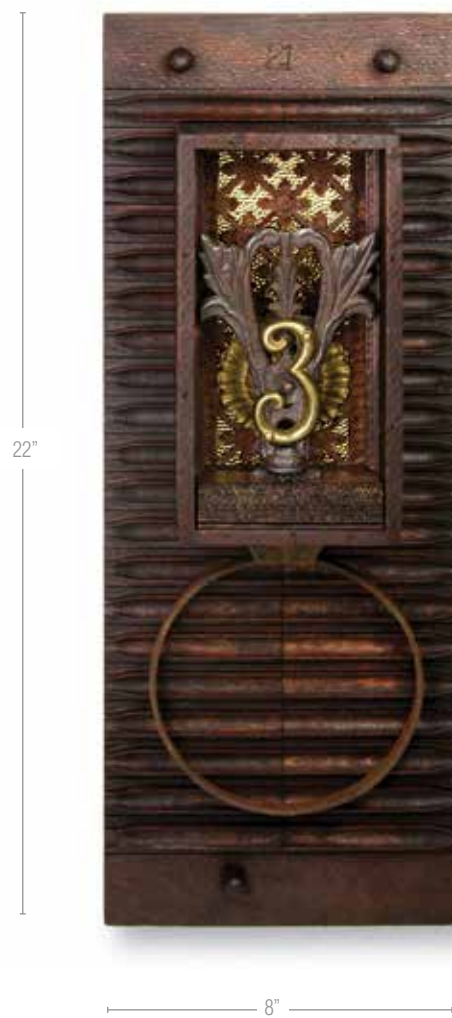
## Pendulum

- Abalone Server
- Porcelain Glass Holder
- Misc. Steel Hardware
- Drawer Pulls



### Number 3

- Lamp Finial
- Brass Numeral
- Metal Hoop
- Misc. Brass Hardware
- Batik Stamp
- Cigar Mold



## Georgia

- Raven Feathers
- Lamp Parts
- Misc. Brass Hardware
- Cedar Shutter
- Wooden Finial
- Animal Skull
- Mirror





## Birth of Venus

- Abalone Shell
- Misc. Brass Parts
- Steel Mesh
- Wood Newel





## Reliquary I

- Clock Base
- Brass Nails
- Cigarette Stand
- Feather
- Glass Display Dome
- Napkin Ring
- Furniture Carving
- Metal Grill

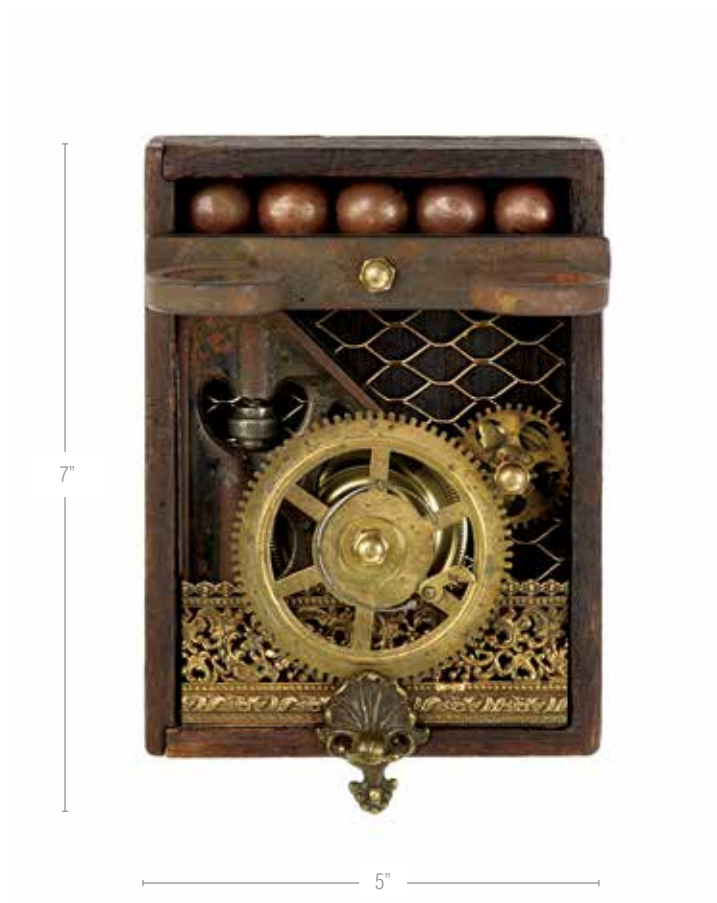


21"

7"

## Number 5

- Five Brass Finials
- Clock Parts
- Angle Square
- Mesh
- Decorative Brass Frame Part
- Furniture Ornament
- Misc. Hardware



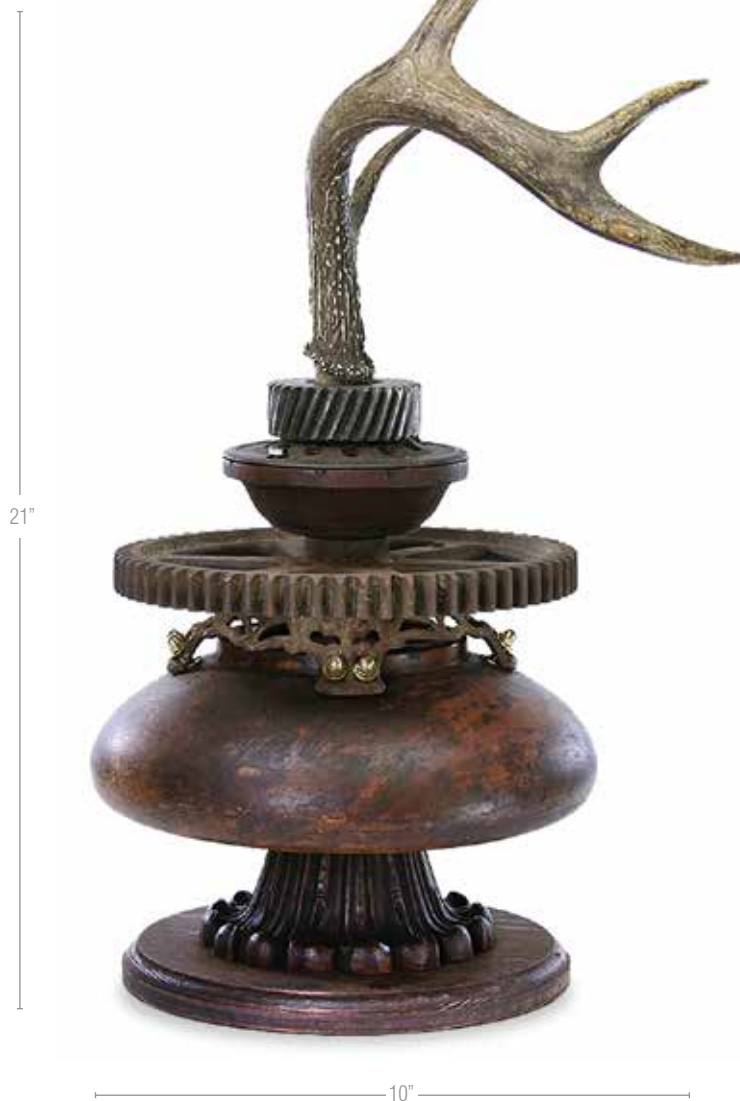
## Suzy's Child

- Teak Screen
- Latch
- Plaster Head
- Candlestick Holders
- Wooden Type
- Misc. Brass



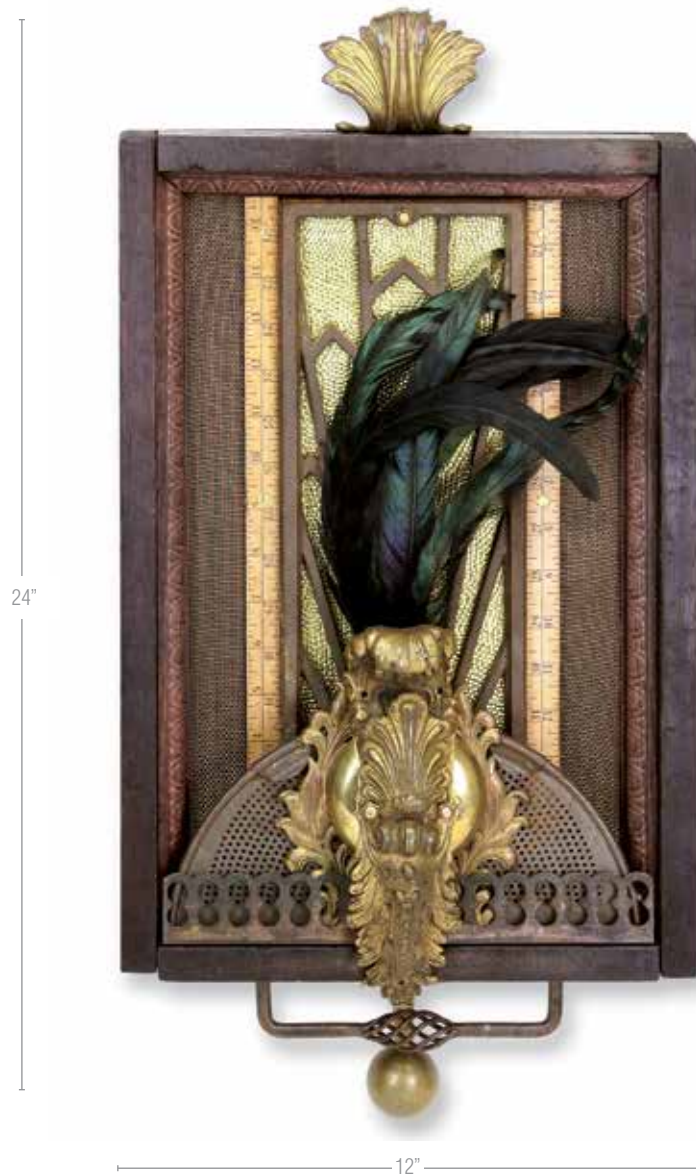
## Ken

- Wooden Bowl
- Misc. Gears
- Wooden Form
- Deer Antler
- Lamp Base



## Isabella

- Steam Grate
- Rulers
- Drawer Pulls
- Raven Feathers
- Decorative Brass
- Screen
- Strainer
- Rod Holder



## 70 Degrees

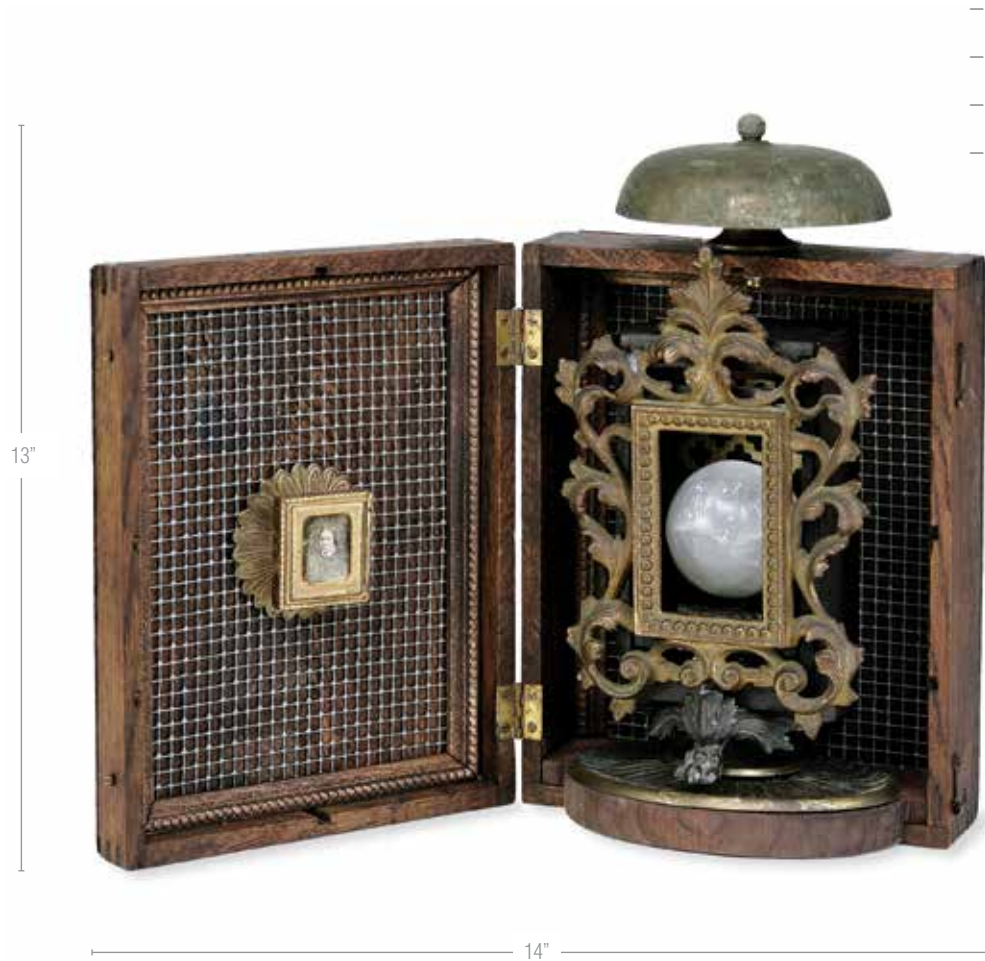
- Furniture Ornament
- Brush
- Calipers
- Clock Parts
- Drawer Pull
- Brass Hardware
- Frame Parts





## In Memory

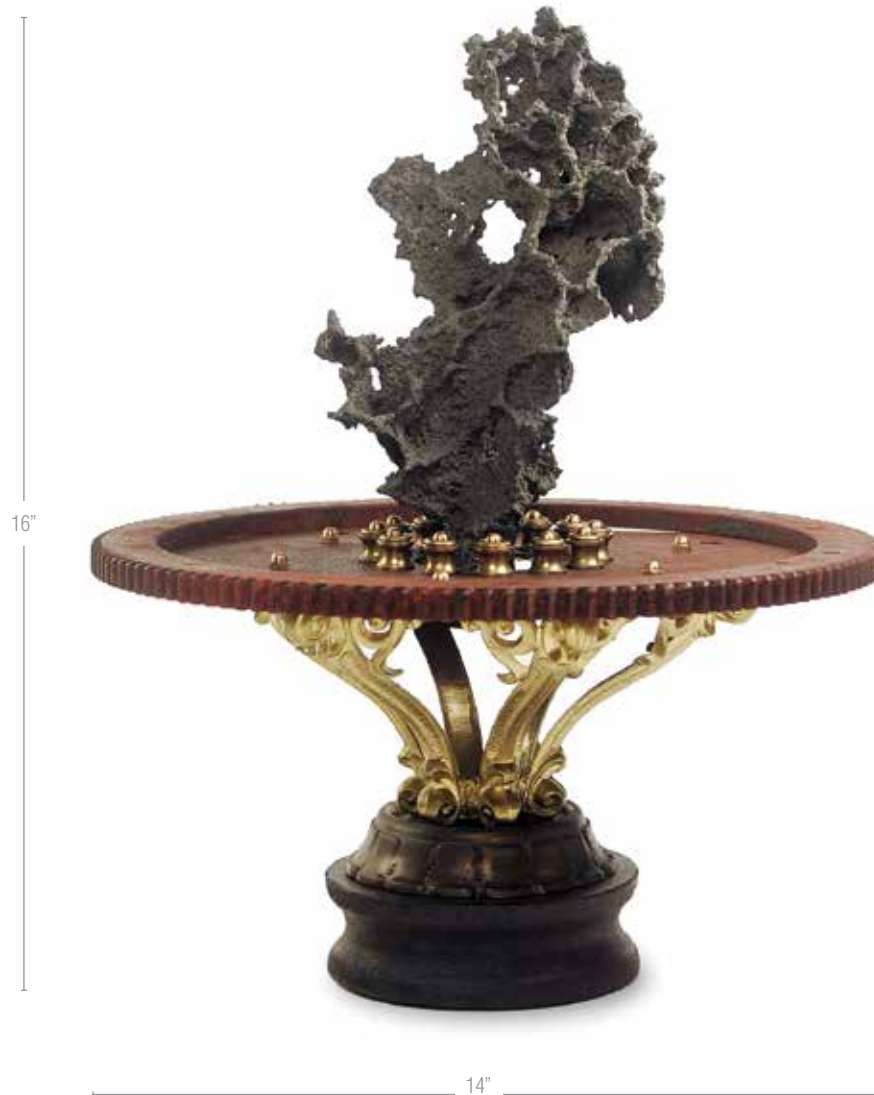
- Alarm Bell
- Brass Light Switch Plate
- Antique Brass Frame
- Clock Foot
- Brass Hardware
- Tintype
- Quartz Orb
- Cigar Box





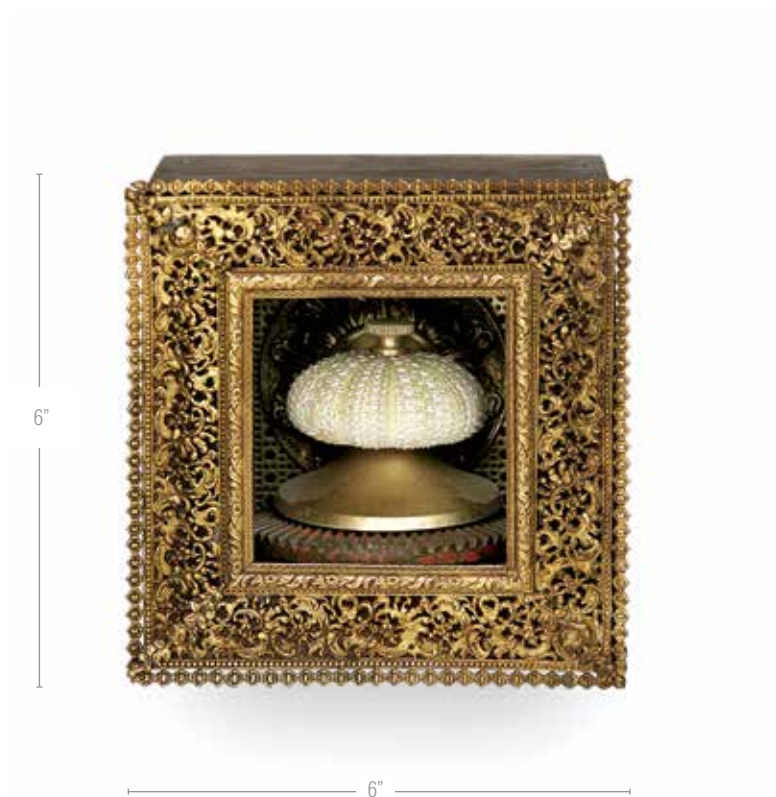
## Last Stand

- Pulley Insert
- Transmission Gear
- Slag
- Outdoor Lighting Frame
- Ceiling Light Base
- Brass Hardware



## Outside In

- Sea Urchin Shell
- Brass Frame Parts
- Brass Hardware
- Gear



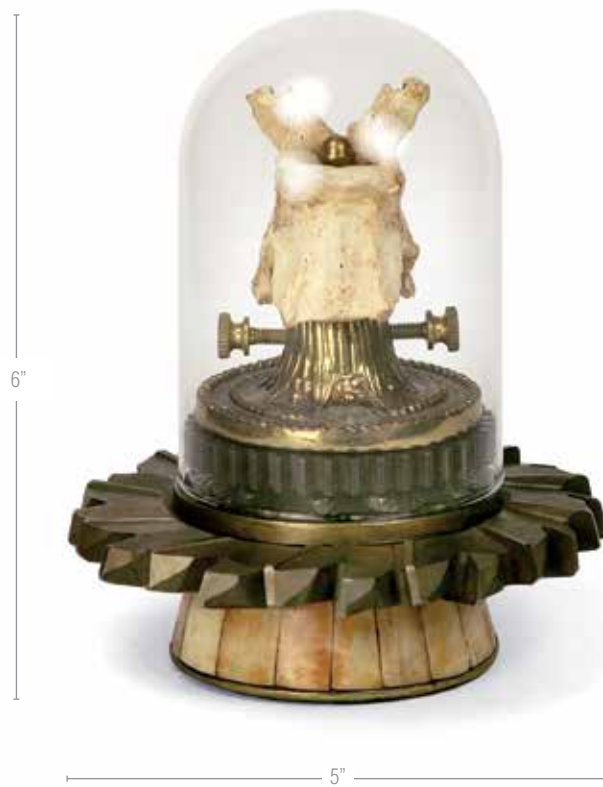
## Constantine

- Wooden Bow
- Metal Screens
- Gear
- Lamp Finial
- Copper Chain
- Misc. Hardware
- Lamp Base



### Reliquary III

- Gear
- Display Dome
- Vertebrae
- Brass Hardware
- Cutting Blade
- Thumb Screws



## MOM (Memories of Morris)

- Sake Cup
- Machine Form
- Crank
- Knife Switch
- Cigar Box
- Deer Bone
- Misc. Hardware



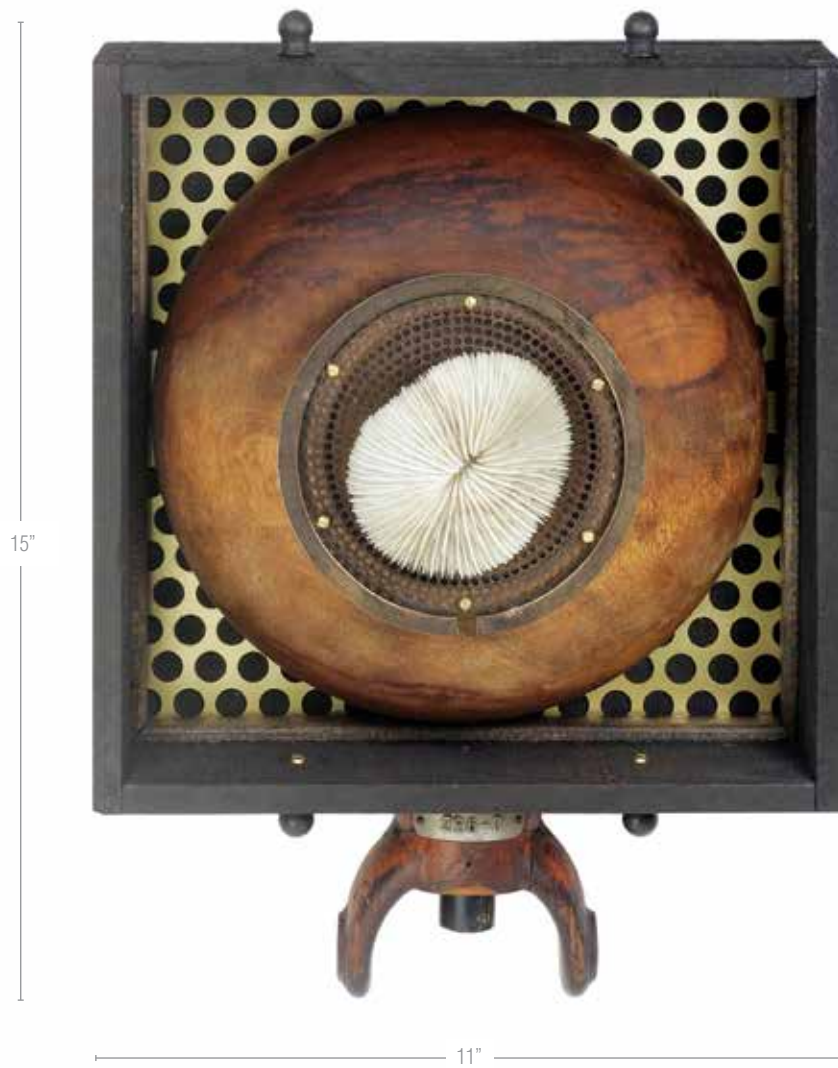
## Reflections

- Butter Mold
- Clock Pendulum
- Gears
- Peacock Feather
- Food Grater
- Misc. Hardware



## Hollywood

- Mushroom Coral
- Wooden Bowl
- Coffee Screen
- Machine Part Mold
- Metal Grill
- Misc. Hardware





## Winter

- Coral
- Gear
- Shaker Box
- Brass Hardware
- Lamp Base



PS 187

- Door Knob
- Heating Vent Part
- Rulers
- Brass Gauge Casing
- Misc. Brass



## Broken Roses

- Decorative Silver
- Stove Part
- Door Latch
- Rose Drawer Pulls
- Wine Bottle
- Lamp Part
- Gear
- Brass Finial



## Gibbous

- Cockle Shell
- Copper Plate
- Drawer Pull
- Copper Engraving Plate
- Misc. Copper



## Spiral

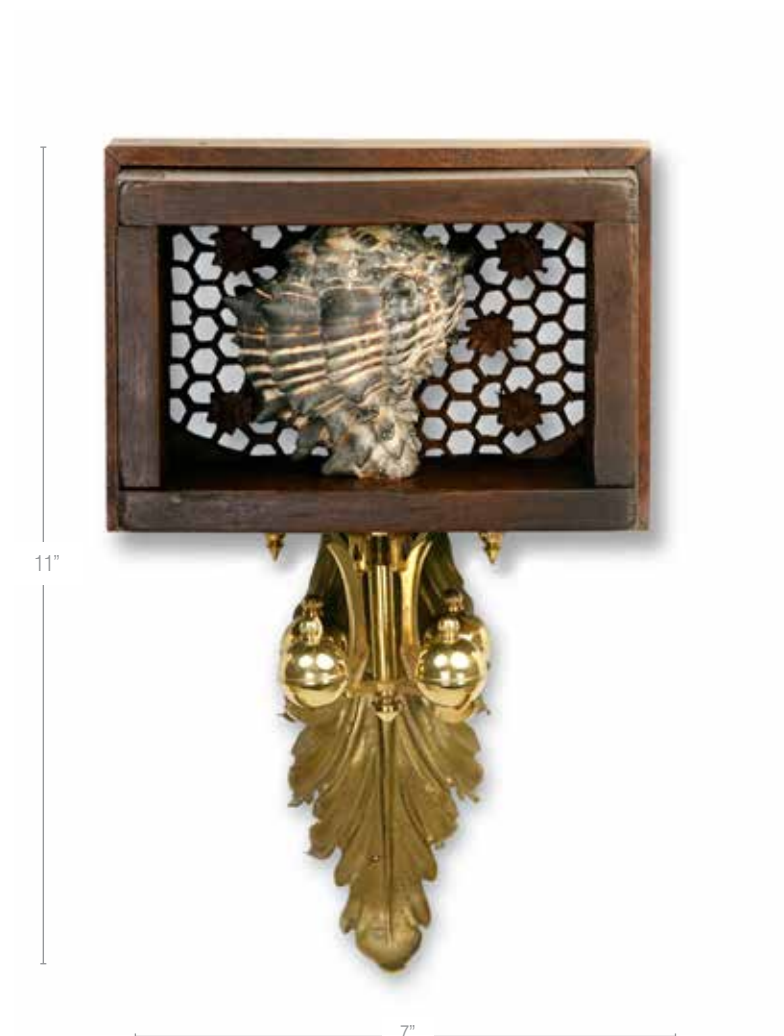
- Drawer Pull
- Alabaster Shell
- Misc. Hardware
- Decorative Tin
- Curtain Tieback





## Stasis

- Teak Screen
- Balance Mechanism
- Butter Mold Frame
- Decorative Brass
- Snail Shell



## Trinity

- Drying Rack
- Metal Grill
- Specimen Tray
- Bird Eggs
- Brass Hardware
- Wood Finial





Leonard

- Decorative Brass
- Laboratory Glassware
- Turtle Shell
- Brass Hardware



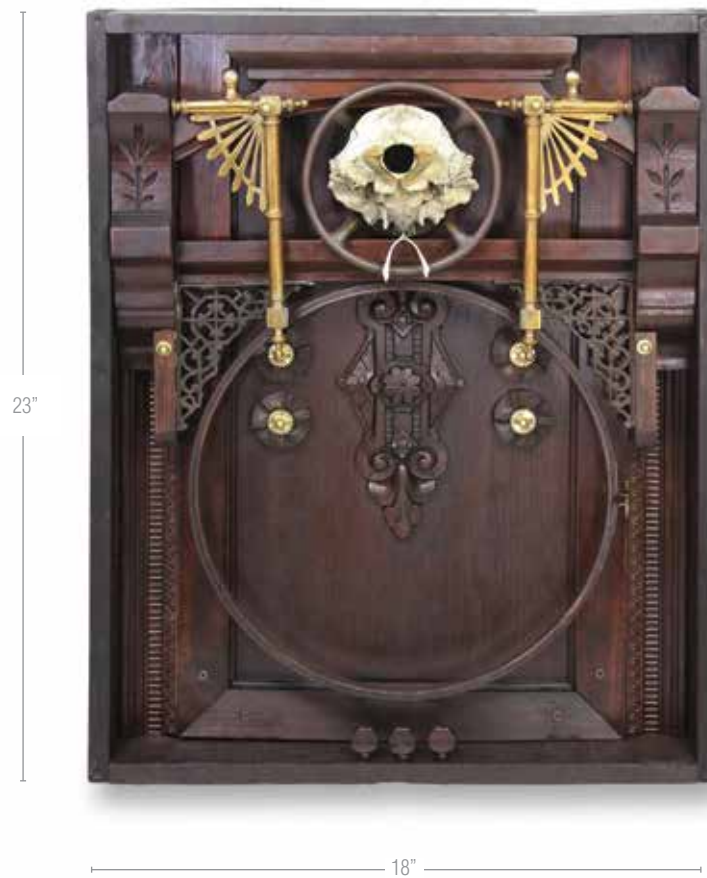
Liz

- Brass Lizard Pin
- Model T Battery
- Misc. Decorative Brass
- Teak Panel



## Number 8

- Tuning Pegs
- Carved Door Panel
- Candelabra
- Furniture Part
- Needlepoint Hoop
- Fire Extinguisher Part
- Shelf Brackets
- Animal Skull
- Chicken Wish Bone



## Autumn

- Ink Well Stand
- Misc. Brass
- Seed Pods
- Coat Rack Part



## Aries I

- Barn Pulley
- Ram's Head Inkwell
- Mica Fan
- Furniture Part
- Candelabra
- Brass Lamp Part
- Shutters
- Cast Iron Stove part
- Furniture Finial
- Drawer Pulls
- Brass Door Knob



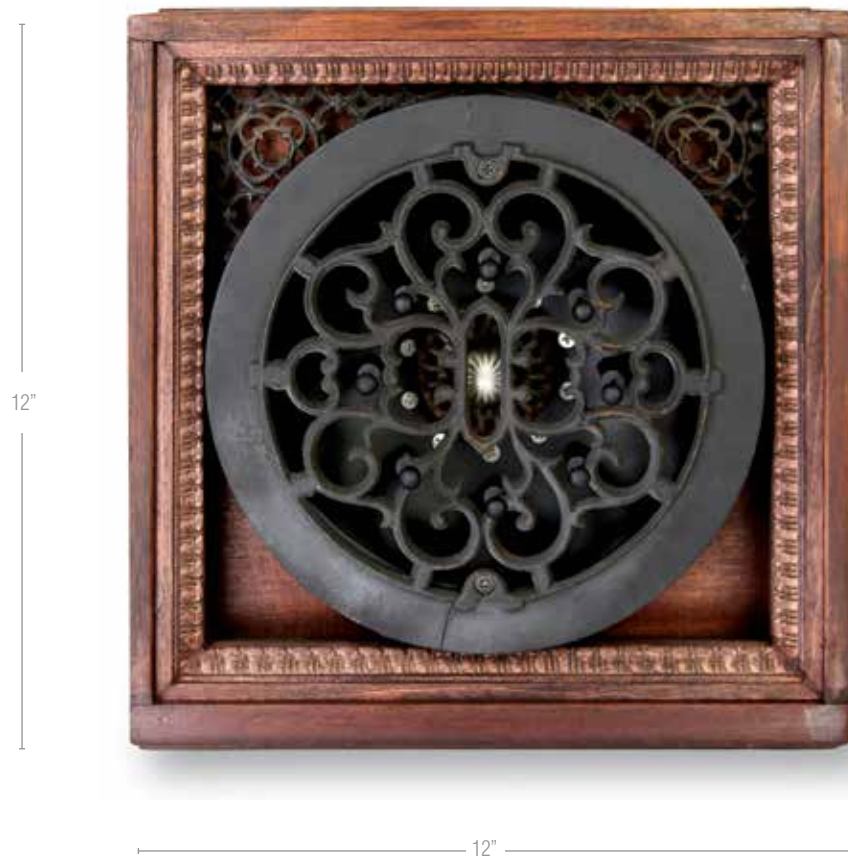
## Ebony I

- Peacock Feather
- Brass Furniture Parts
- Piano Keys
- Decorative Metal
- Drawer Pulls
- Wooden Type



## Ebony II

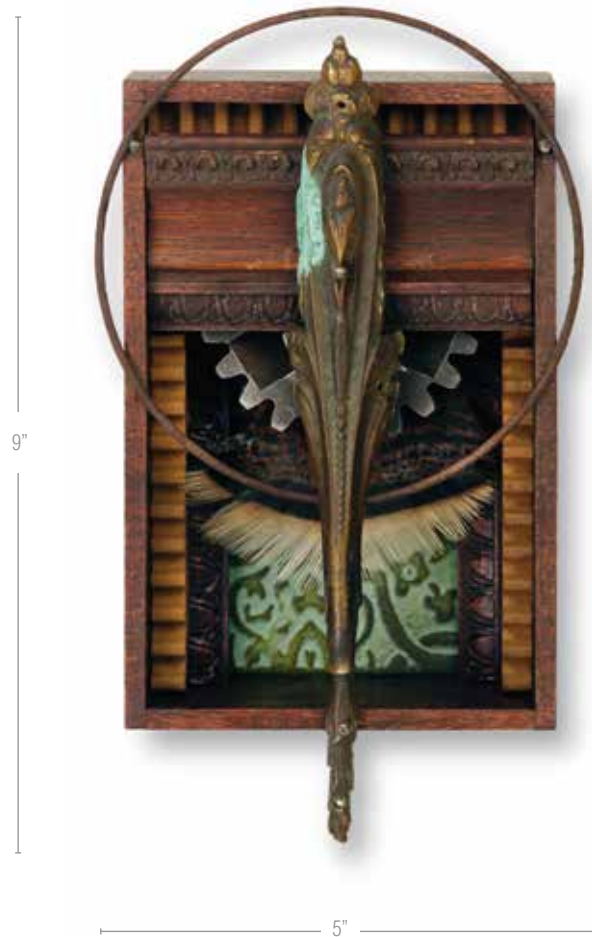
- Shelf Brackets
- Drawer Pull
- Wooden Bowl
- Valve Handle
- Heating Grate





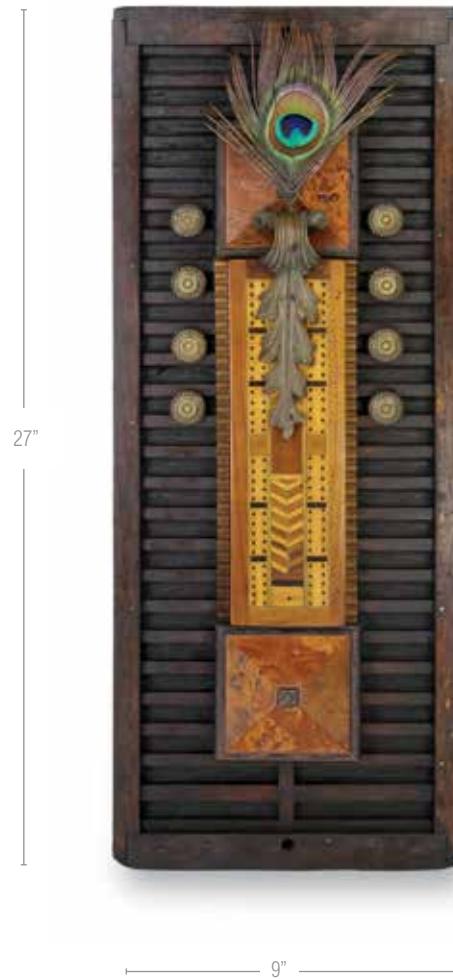
## Verdigris I

- Decorative Tin
- Gear
- Brass Furniture Part
- Metal Hoop
- Turkey Feather



## Cribbage I

- Drying Rack
- Drawer Pulls
- Framing Cut Offs
- Cribbage Board
- Peacock Feather
- Decorative Metal



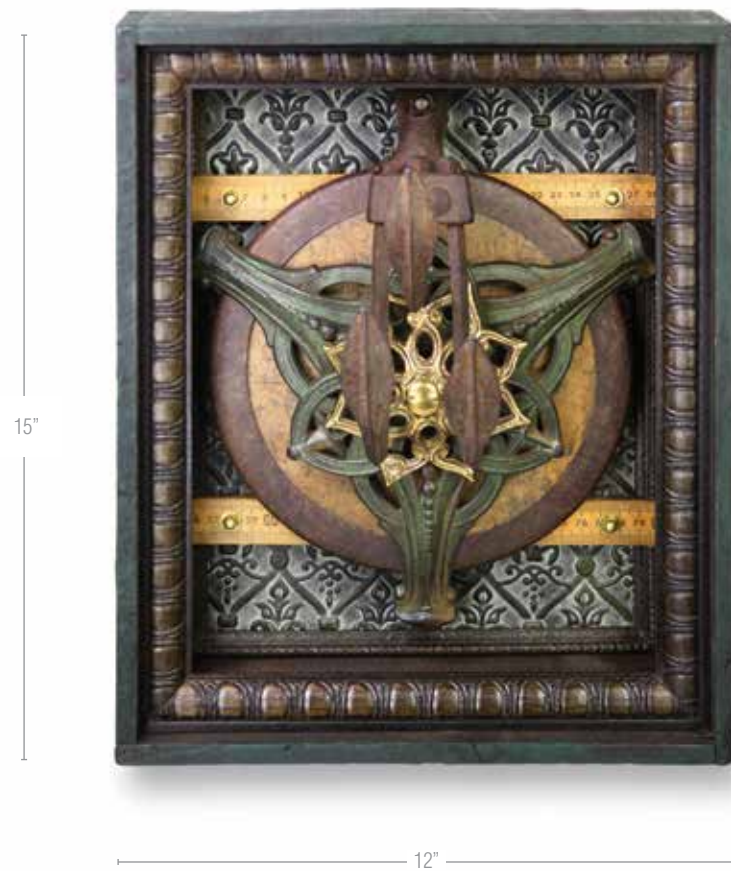
## Washington

- Machine Level
- Antique Brass Paper Clip
- Rusted Drain
- Lamp Surround
- Wooden Type
- Copper Plate Portrait
- Decorative Hardware



## Green Room

- Hand Cultivator
- Discus
- Christmas Tree Base
- Decorative Tin
- Wooden Rulers
- Misc. Brass



## Nike II

- Gear
- Small Animal Pelvis
- Wooden Form
- Brass Base
- Connecting Rod

13"



7"

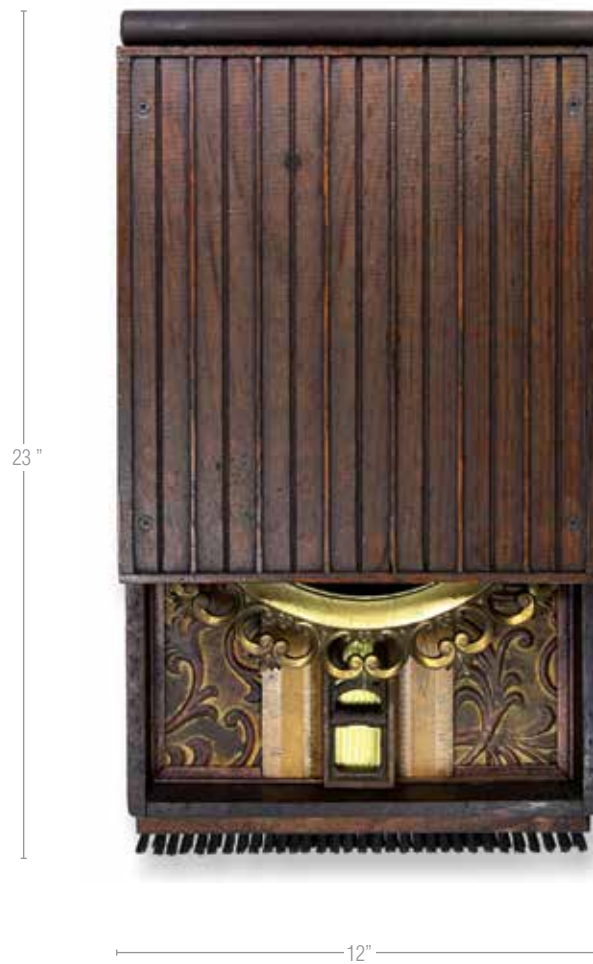
Charles

- Slicing Board
- Fish Fossil
- Drawer Pull
- Misc. Hardware
- Pipe Clamp
- Fan Coral



## Necessary Elements

- Stamped Tin
- Frame Part
- Antique Rulers
- Carpenter's Level
- Brass Sheet
- Stencil Brush





C.R.

- Brass Lamp Part
- White Tile Surround
- Albino Peacock Feather
- Brass Hardware
- Drawer Pull



Meryl

- Door Pull
- Tiger Cowry Shells
- Glass Door Knob
- Food Grater
- Metal Dish
- Misc. Hardware



## Ketch

- Decorative Teak
- Frame
- Oyster Shell
- Brass Hardware
- Fan Coral
- Wooden Newel
- Misc. Metal Parts



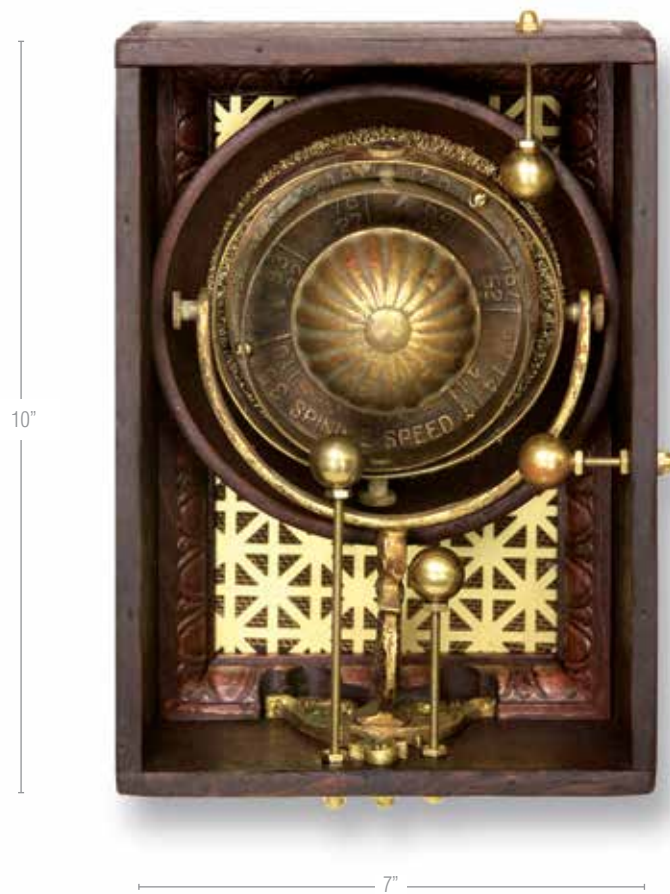
Jimmy

- Clock Part
- Frame Molding
- Screen
- Ice Cream Scoop
- Drawer Pull
- Misc. Metal Parts



## Nicolaus

- Spindle Speed Dial
- Misc. Brass Hardware
- Brass Orb Holder
- Wooden Bowl
- Brass Buffing Wheel

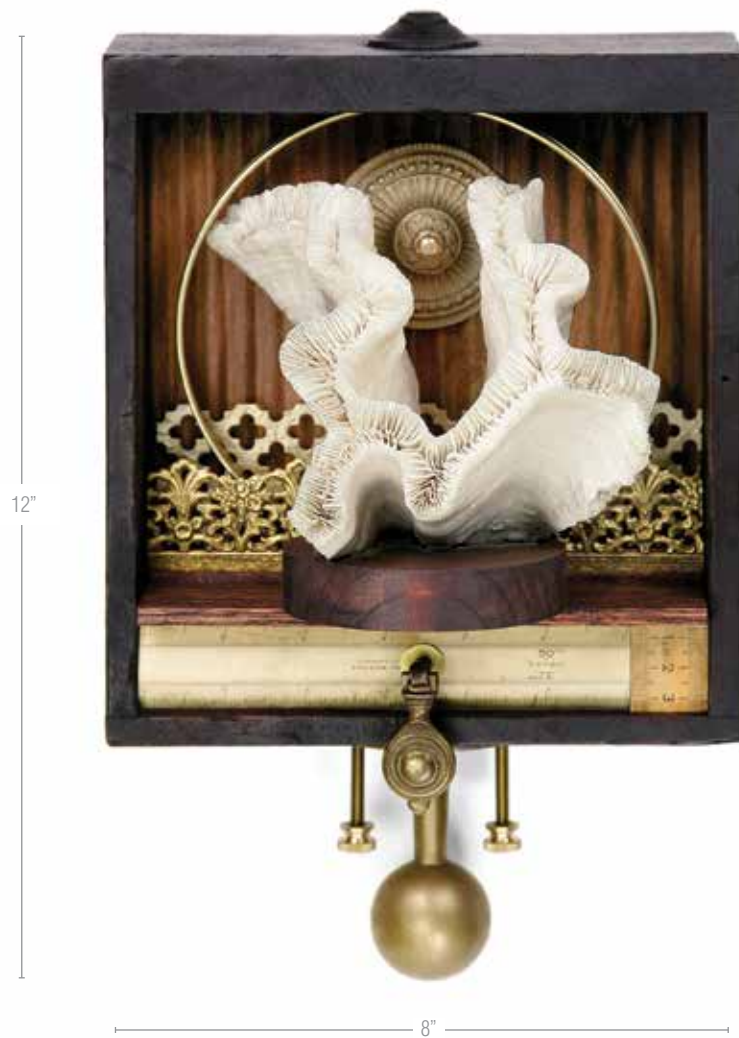


## Will Call

- Lamp Parts
- Decorative Brass
- Saxophone Key
- Service Bell
- Sign Painter's Brush
- Pulley Part



- Decorative Brass
- Coral
- Needlepoint Hoop
- Brass Rod Holder
- Antique Rulers
- Brass Hardware
- Card Punch Base





## French Monarchy

- Gears
- Industrial Chop Sticks
- Metal Hoop
- Coral
- Decorative Clock Feet
- Metal Grill



## Hand of Dave

- Drawer Pulls
- Sculpture Pieces
- Kitchen Knobs
- Gold Leaf
- Feathers
- Snail Shell
- Tintype
- Brass File Pulls



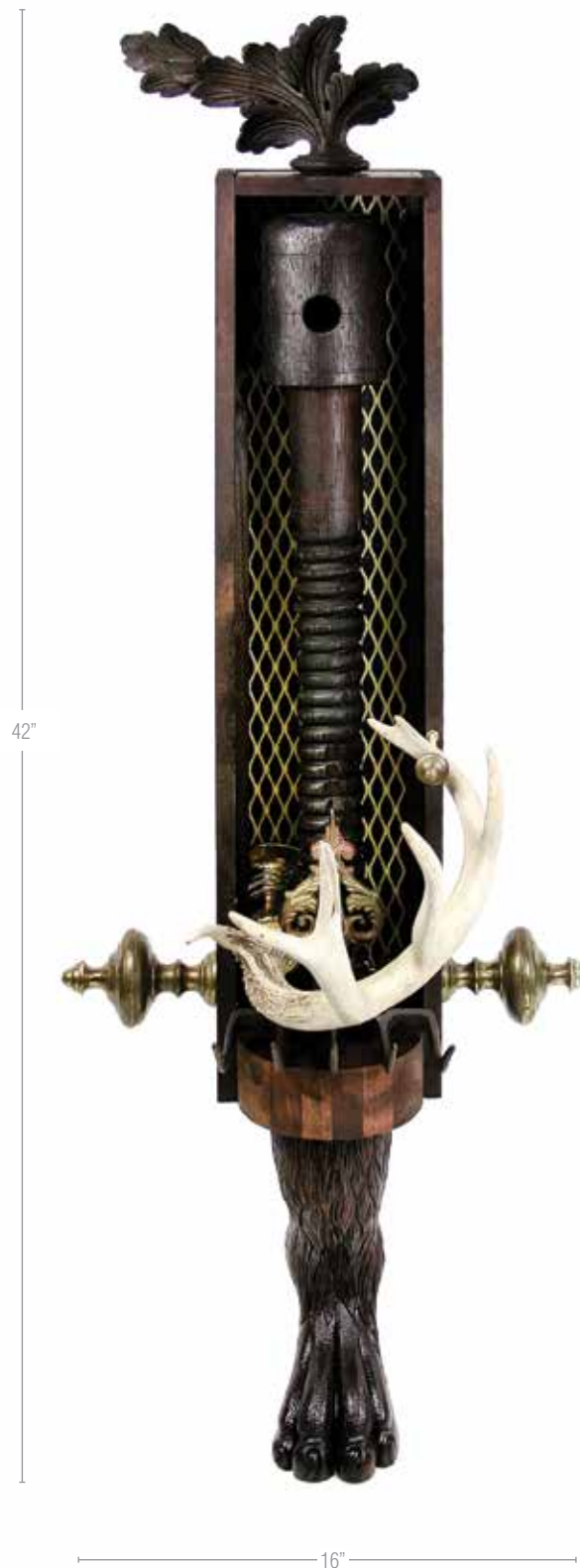
lo

- Pumice Ball
- Brass Frame
- Gold Leaf
- Brass Chain
- Drawer Pull



## Yeti

- Wood Table Screw
- Deer Antler
- Metal Grill
- Brass Curtain Finials
- Decorative Wood Finial
- Brass Hardware
- Table Foot
- Hand Cultivator
- Cutting Board



## Reliquary II

- Glass Wine Stopper
- Brass Plate
- Mammal Tibia
- Wheel Bearing
- Lamp Base
- Brass Rod Holders
- Brass Hardware



## Chatterbox

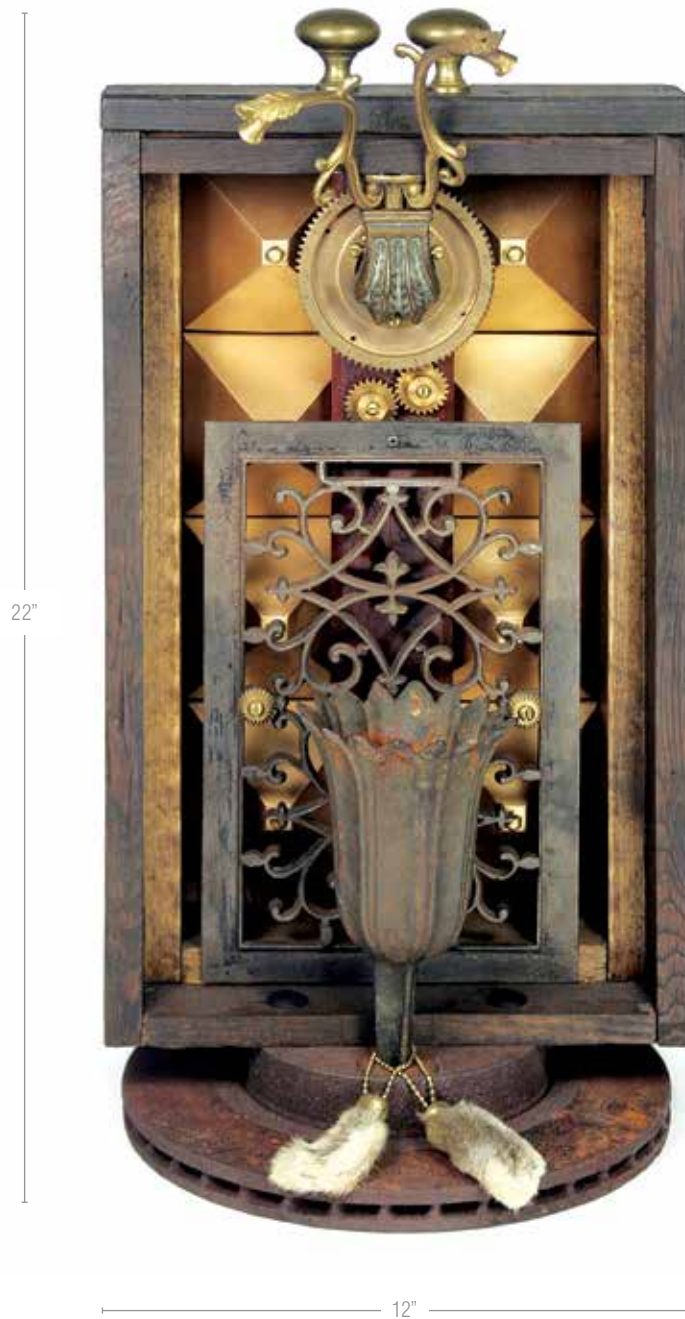
- Nautical Sight
- Tooth Casting
- Brass Frame Parts
- Clock Chime
- Napkin Ring
- Chicken Feathers





## Good Night & Good Luck

- Floor Grate
- Drawer Pulls
- Funeral Urn
- Gears
- Fence Post Caps
- Rabbit Feet
- Disc Brake
- Brass Hardware





## Spring

- Brass Nautical Parts
- Cutting Board
- Glass Candle Shade
- Brass Plumbing Parts
- Turkey Feather



## Blue Iris

- Antique Machine Vent
- Towel Holder
- Wire Brush
- Glass Eye
- Porcelain Light Socket Base
- Misc. Hardware



## Rondel

- Shaker Box Lid
- Stove Cover Plate
- Carpenter's Plane
- Belt Buckle



Joseph

- Grinding Stone
- Lamp Base
- Peacock Feather
- Lamp Parts
- Pulley Wheel
- Brass Hardware



René

- Wooden Finial
- Birch Branch
- Brass Hardware



## Examination

- Drawer Pulls
- Brass Rivets
- Magnifying Glass
- Boot Cleaner
- Gold Leaf
- Brass Hardware
- Trilobite Fossil



Rob

- Wire Brush
- Teak Screen
- Wooden Drawer Pulls
- Decorative Brass
- Coral
- Hat Pin





## Vanishing Point

- Peg Board
- Snail Shell
- Brass Lamp Parts
- Decorative Tin
- Brass Rail



## Eclipse

- Gilded Ornament
- Wooden Bowl
- Brass Frame Parts
- Carpenter's Pipe Clamp
- Brass Plumbing Weight
- Buffing Wheel
- Brass Chain
- Misc. Hardware



## Nike I

- Brass Bowl
- Seagull Feathers
- Thumb Screws
- Brass Chain & Finials
- Lamp Collar
- Sugar Bowl Cover
- Spinning Wheel Part



Steve

- Brain Coral
- Brass Plating
- Frame Parts
- Wooden Newel



## Pan

- Drawer Pull
- Aluminum Angle Stock
- Bread Pan
- Wine Coaster
- Slag
- Drawer Handle



## Silver Satori

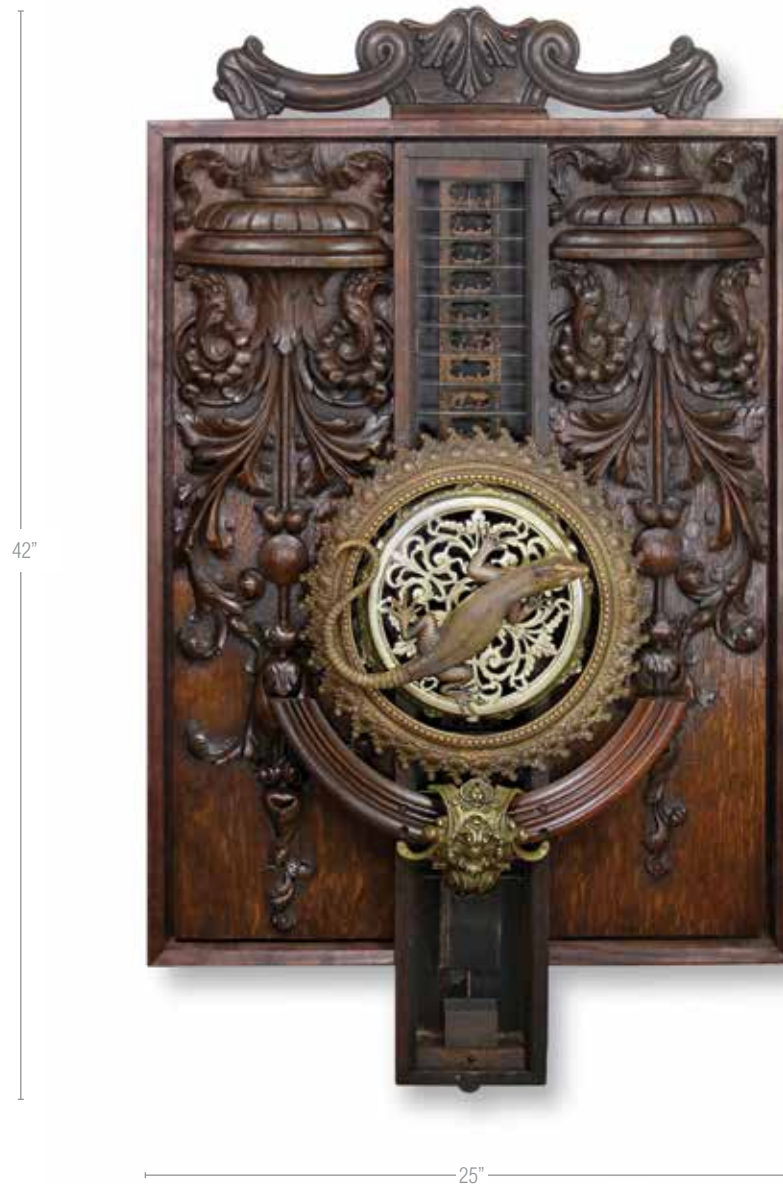
- Angle Gear
- Lamp Reflector
- Music Box Base
- Flower Frog





## Maralyn

- Carved Furniture Panels
- Circular Brass Frame
- Antique Punch Card Holder
- Brass Lamp Part
- Antique Brass Lizard
- Misc. Brass
- Carved Chair Part
- Brass Trivet





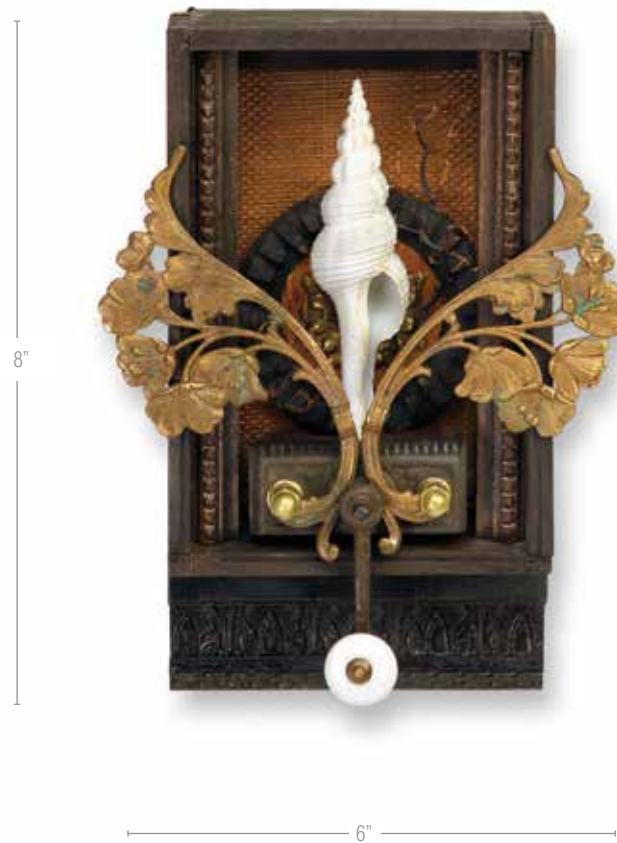
## Satori II

- Brass Bowl
- Misc. Brass Hardware
- Porcelain Flower
- Lamp Surround



## Monarch II

- Gear
- Brass Candelabra Parts
- Copper Mesh
- Tropical Spindle Shell
- Window Latch



Paul David

- Brass Knob
- Gilded Frame
- Tropical Spindle Shell
- Brass Frame Part

